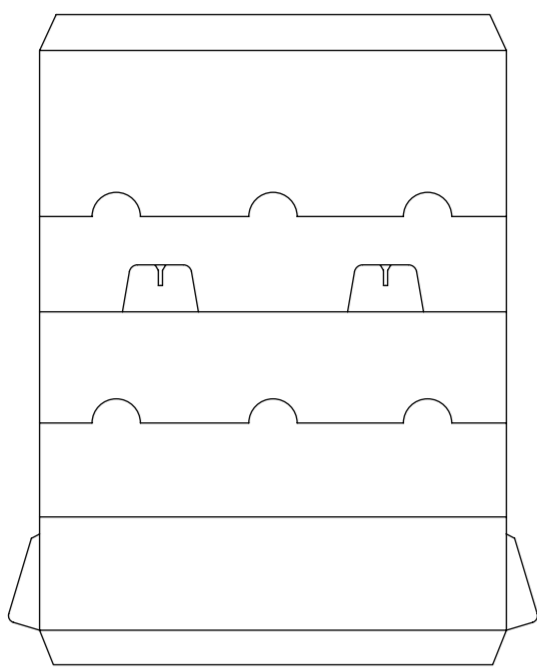


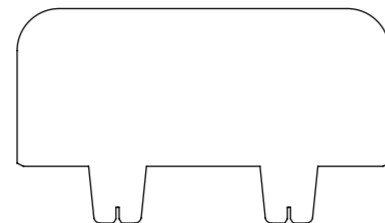
# CDU WITH SHELF FITTMENT - ASSEMBLY GUIDELINES

THIS PACK WILL CONTAIN THE FOLLOWING ITEMS:

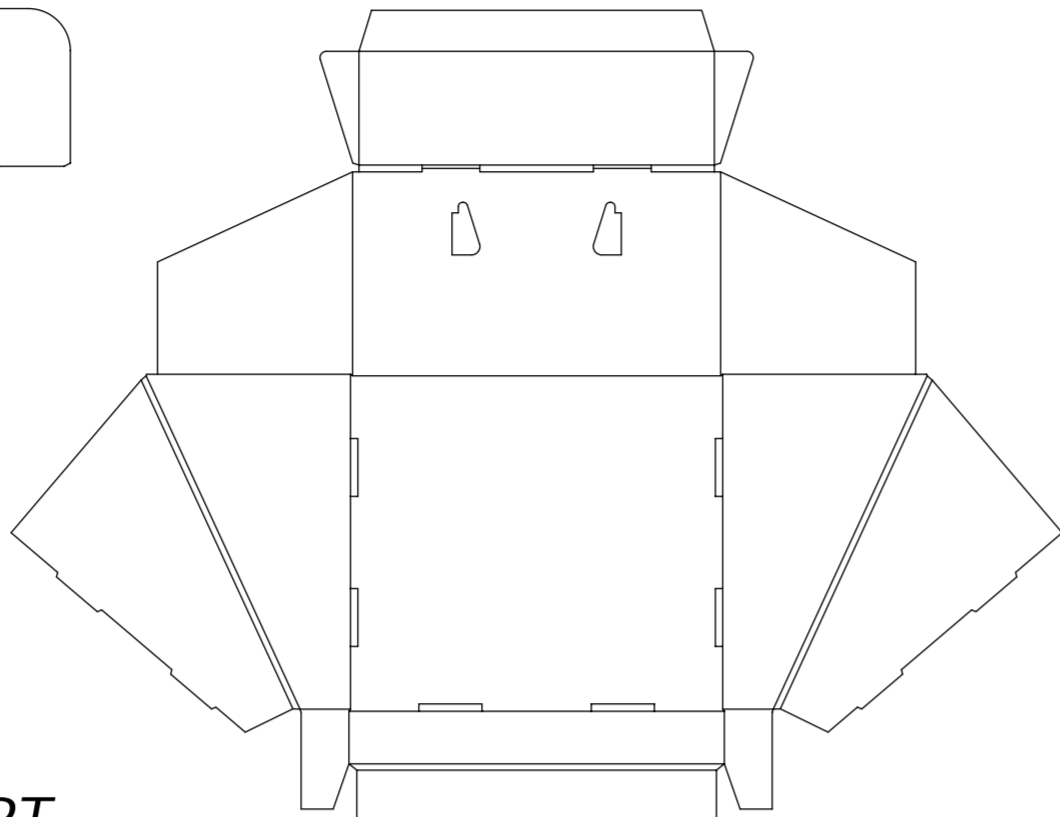
SHELF FITTMENT



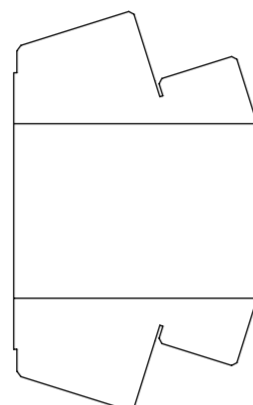
HEADER



TRAY

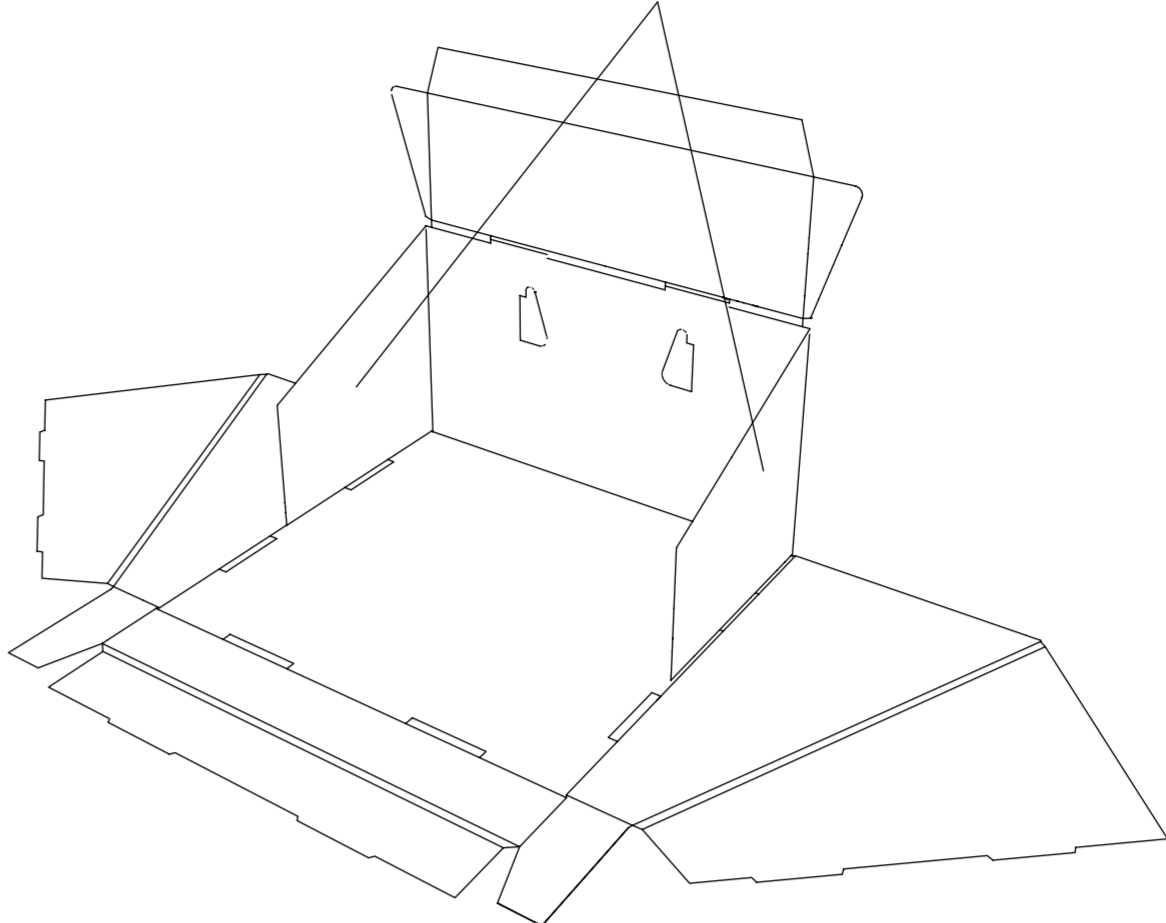


SHELF SUPPORT



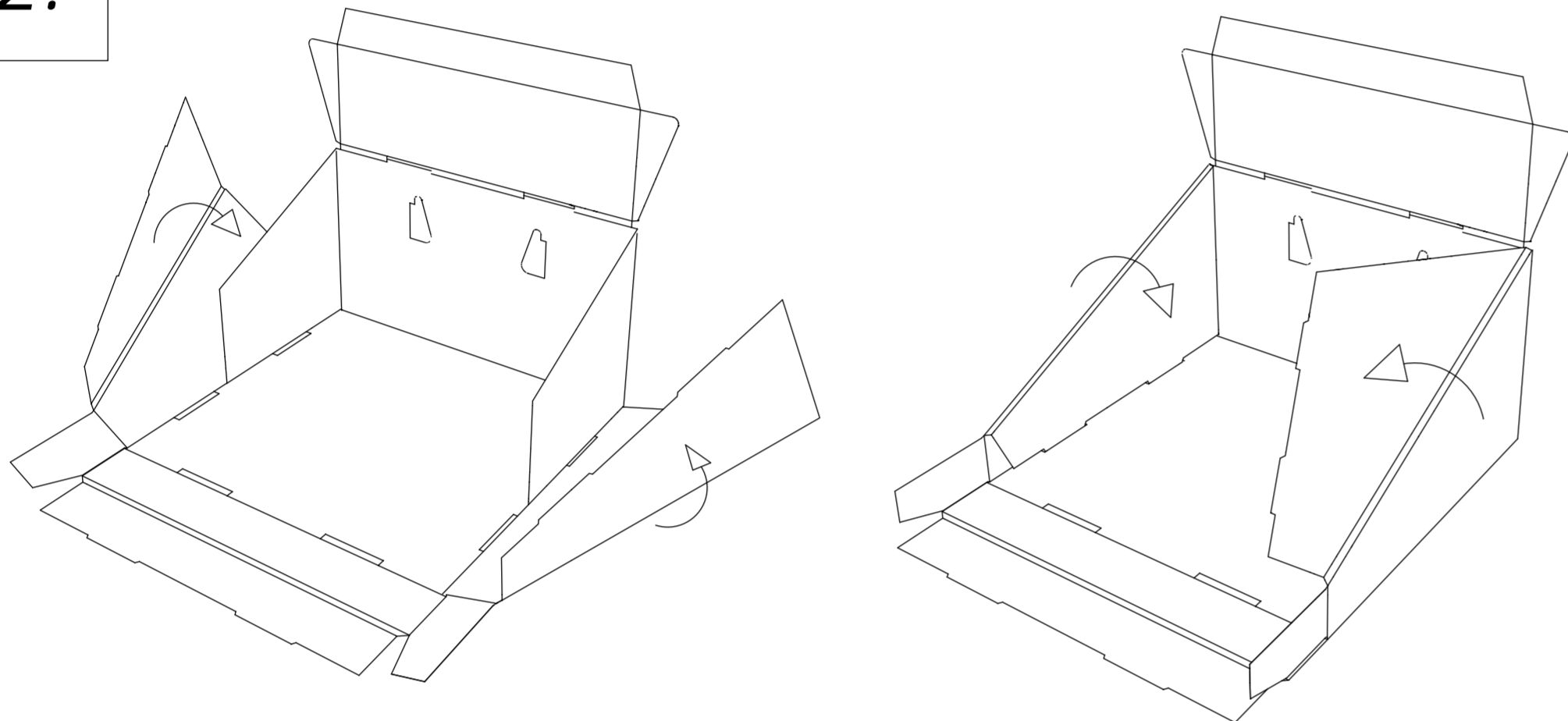
1.

Side wings



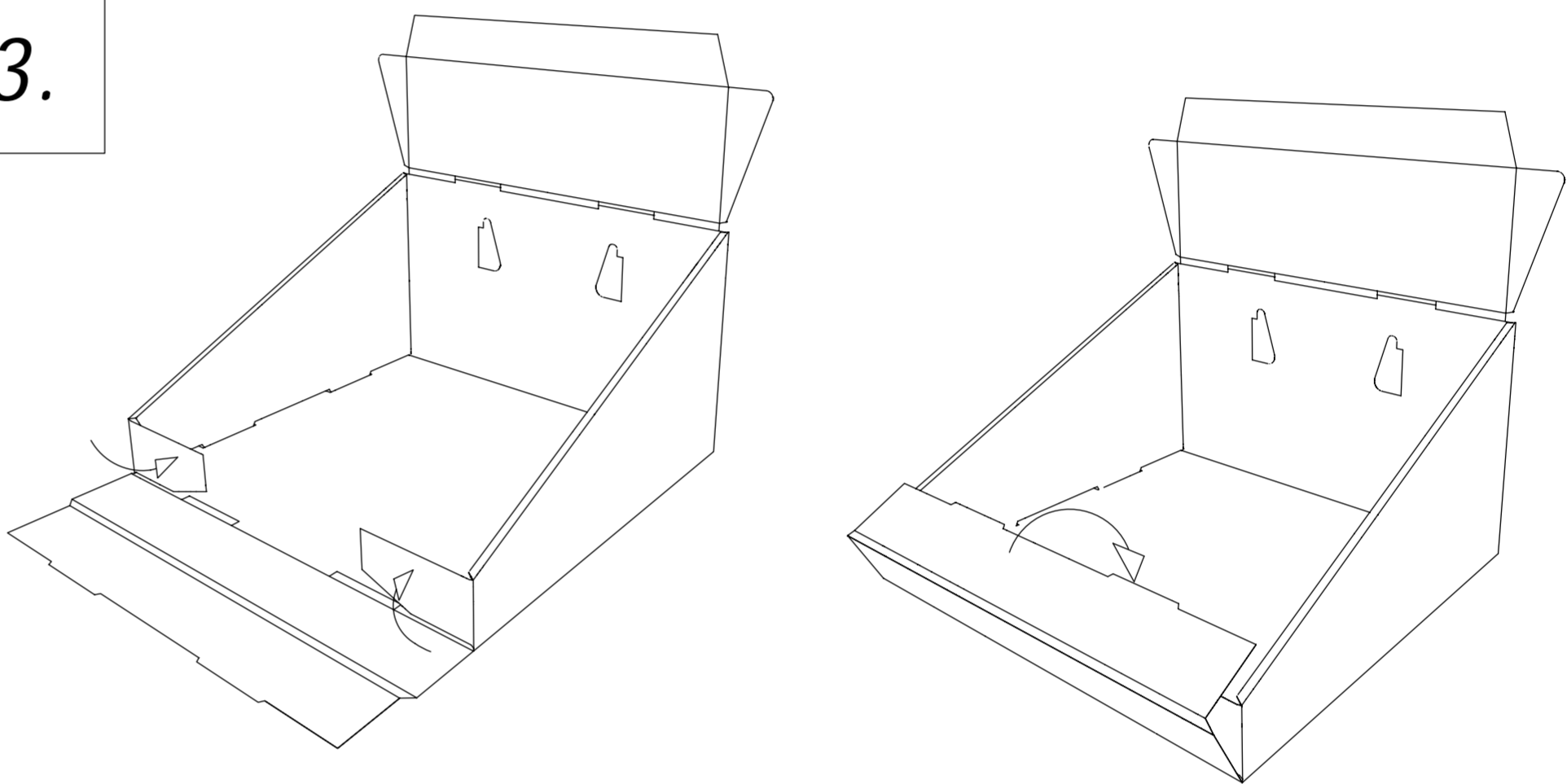
Lift up the back panel and fold in the side wings.

2.



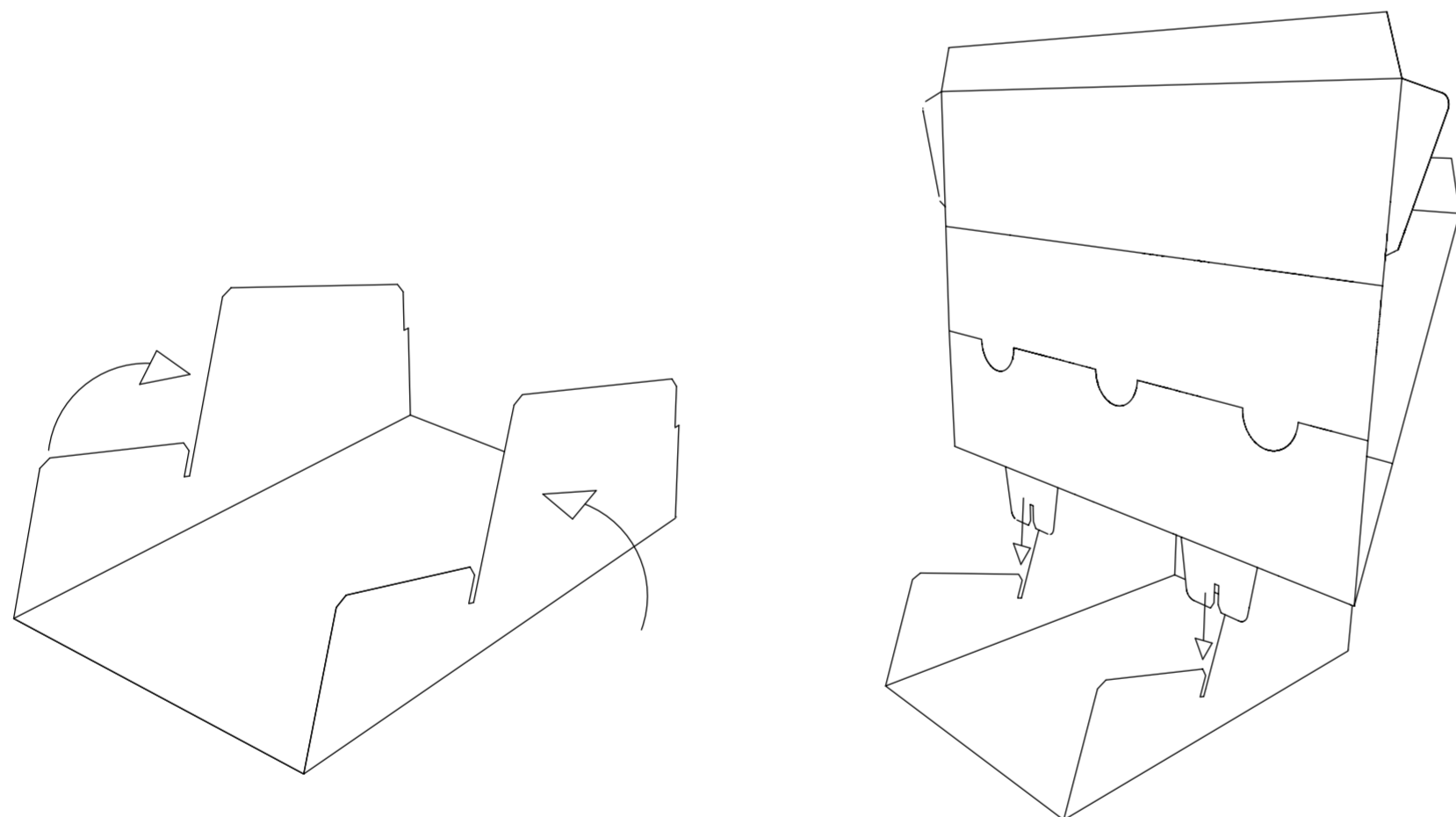
Next, fold the side panels over the side wings and locate the lugs into the corresponding slots in the base of the tray.

3.



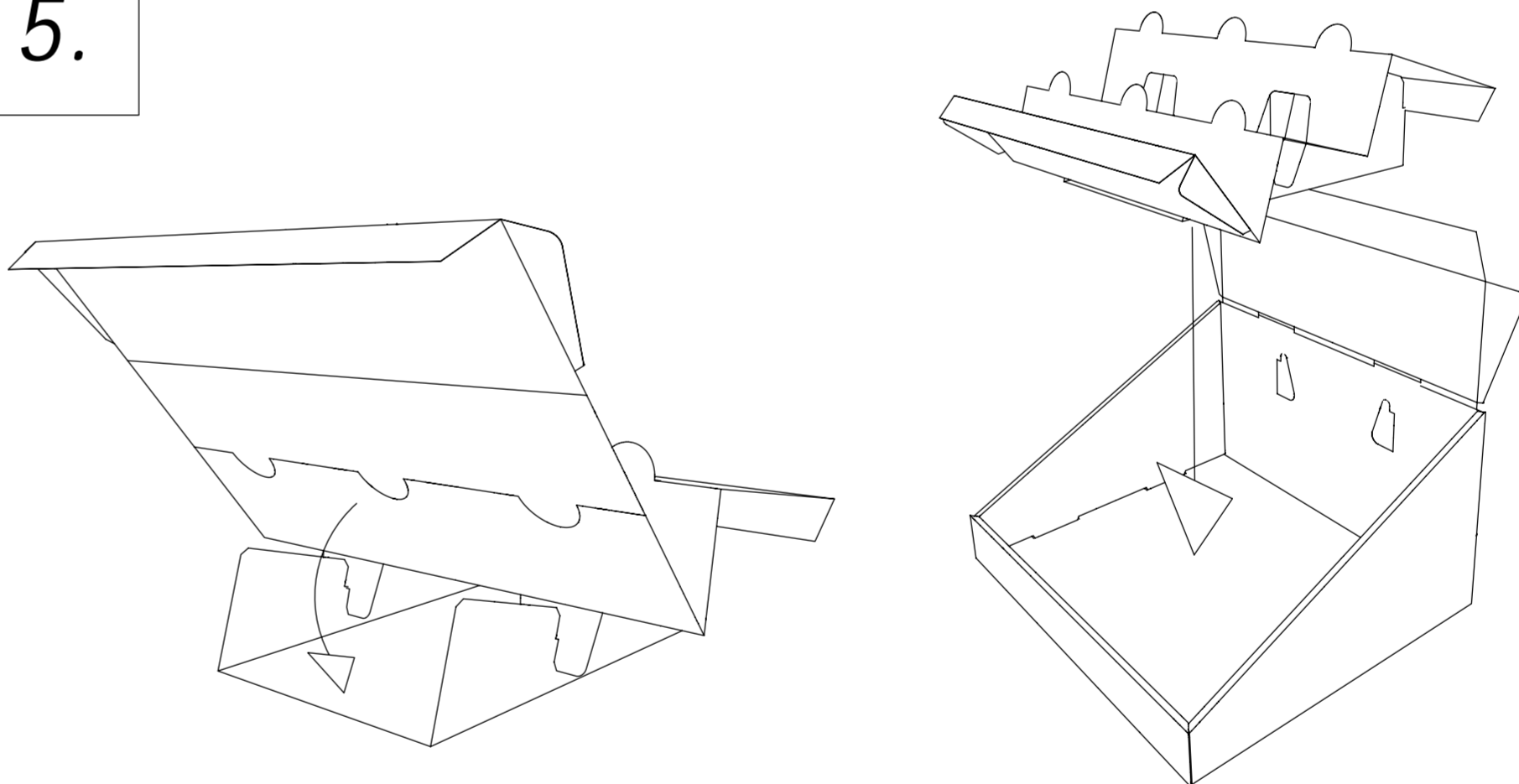
Fold in the smaller side wings to 90 deg.  
Lift up the front panel and fold over the top of smaller side wings.  
Locate the lugs into the corresponding slots in the base of the Tray.

4.



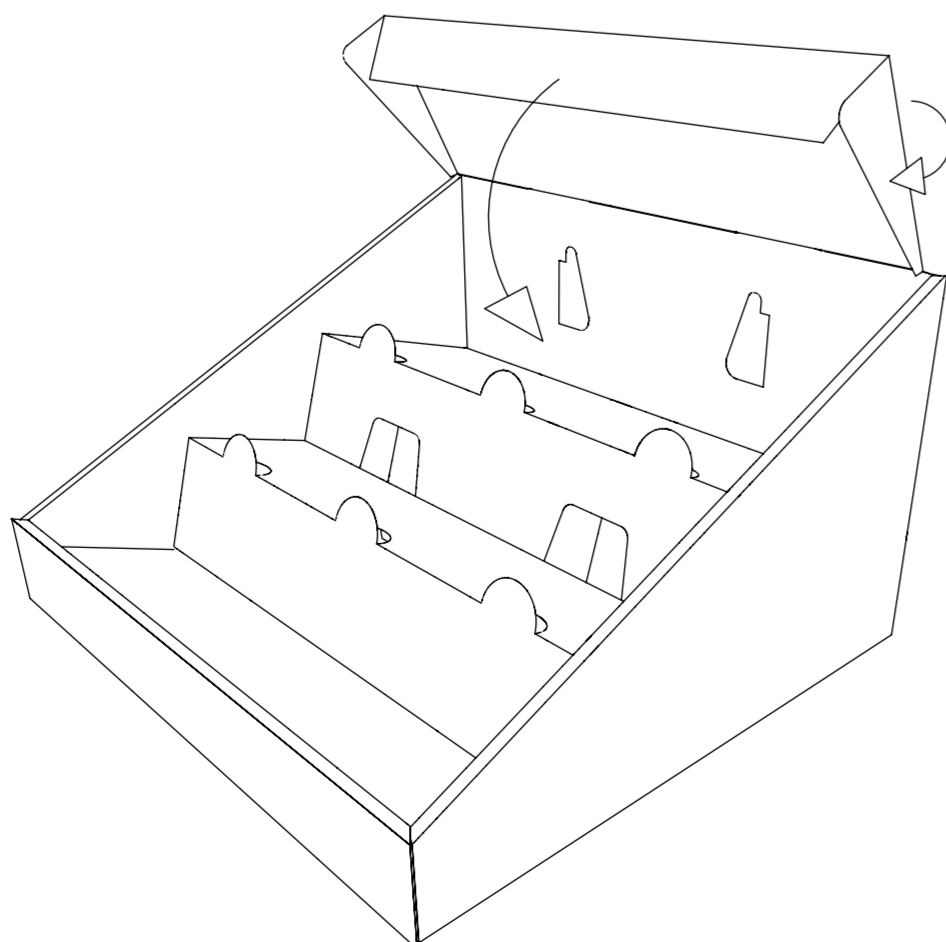
Take the Shelf Fittment and fold up the sides.  
Insert the shelf fittment into the shelf support as shown

5.



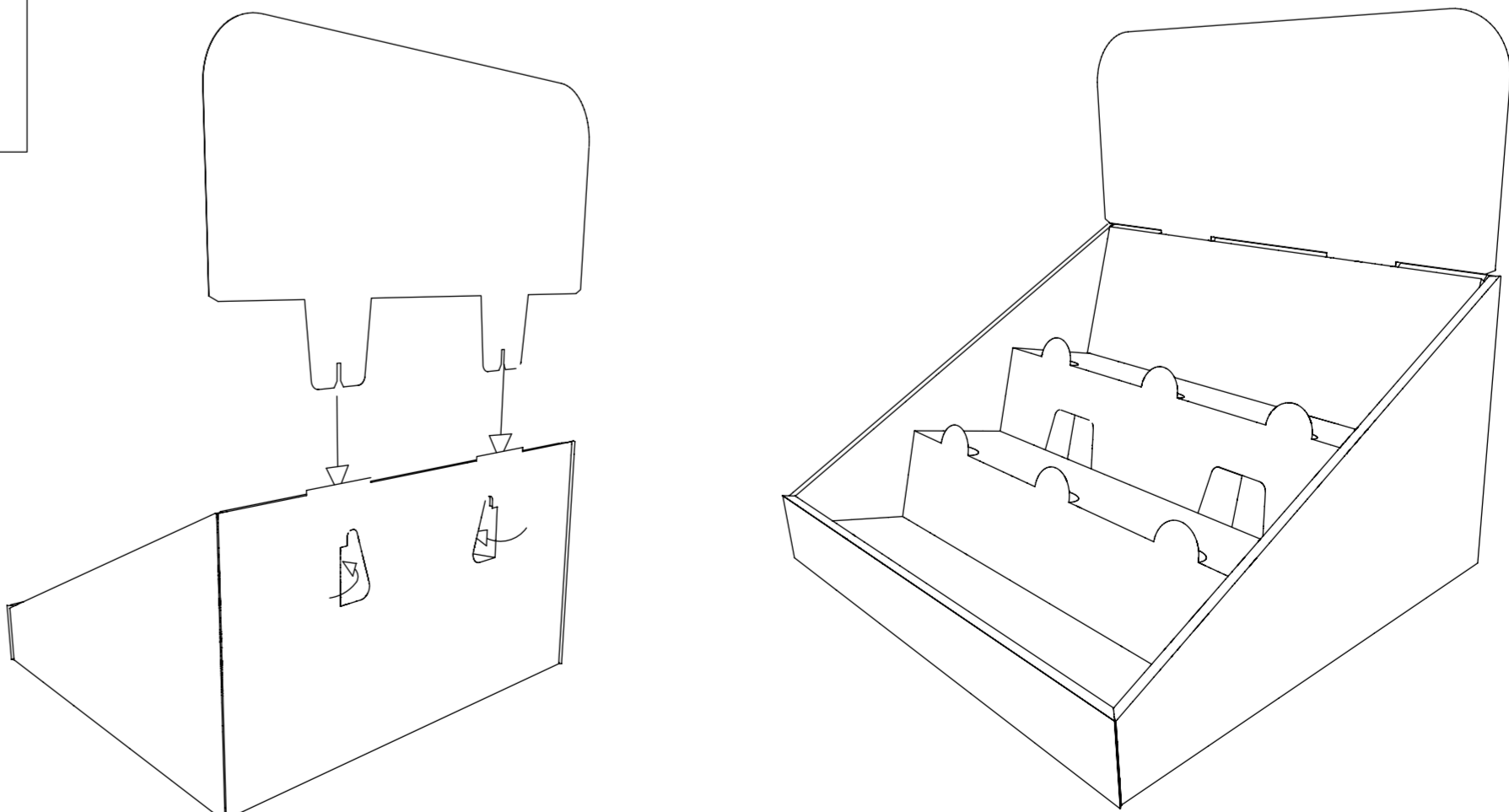
Fold the Shelf fittment around the shelf support to form each level and insert into the tray.

6.



Fold over the Back section of the tray.  
Fold in the small wings.

6.



Push in the 2 tabs on the back of the CDU.  
Insert the header and the slots in the header  
Slot over the tabs.